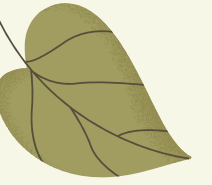


The
Education
University



TRUSTATION

Trust Your Trash To Our Station

Waste Management Plan Through Waste Bank in Higher Education

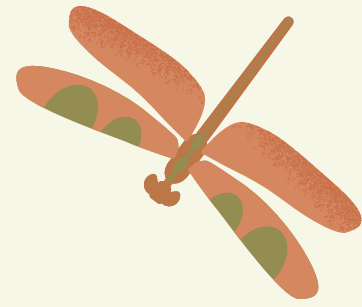
Located at Universitas Pendidikan Indonesia,
Jl. Dr. Setiabudi No.229, Isola, Kec. Sukasari,
Kota Bandung, Jawa Barat 40154



Retno Ayu Hardiyanti
Pendidikan IPS-0011049402

Open dumping method



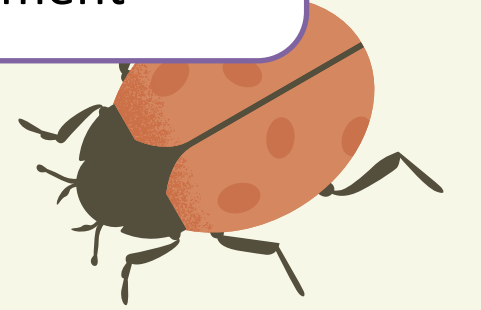


National waste disposal management Information System (SIPSN) shows:

34 MILLION TONS

Campuses have more literate human resources

Campus should be a pioneer in waste management



Campuses are places that have the potential to have high volumes of waste.



Method

Interviews



Surveys



Literature studies

UPI TPS officer, Biro Sarana dan Prasarana

open questionnaire and closed questionnaire

Books and articles

Strategy to simplify waste management

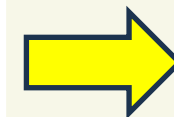
Motivate the campus community to sort waste

Open opportunities for collaboration with industries/companies

We found that

UPI has no shortage of experts on waste issues, it's just that its struggle is still partial and not yet supported by collective awareness. Apart from that, there are no centralized facilities for waste management.

Waste Bank



Waste Management Survey Among UPI Residents

Data	Majority of Responses	Number of Respondents*	Percentage
Waste disposal	Disposed of mixed with other types of waste	179	68,8%
Garbage Separation Results	Submitted to the waste manager/bank/scavenger	182	70%
Garbage Sorting Barriers	There are no nearby facilities/places/managers after I did the waste sorting	190	73,1%
Waste Processing Self Evaluation	I care about the garbage problem, I tried to sort the garbage, but it's still not consistently done	131	50,4%
*Number of all respondents: 260			

(Developed by research team, 2023)



Strategic Movement

HR Readiness





Availability of Facilities and Infrastructure

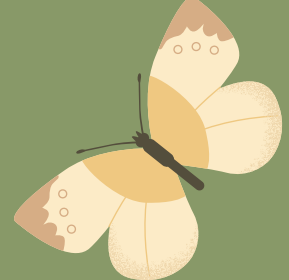




Management Engagement





It requires the connection of many parties, to a mutually beneficial relationship if waste banks are to be realized in universities. Among them:

- 
- 
1. Converting waste savings into a Single Tuition Fee (UKT) discount
 2. Waste bank management that empowers students. So that their involvement is recognized and can be converted into course credits
 3. Forming an environmental care community at the university
 4. Collaborate with brands, institutions or companies that have a similar vision
- 
- 